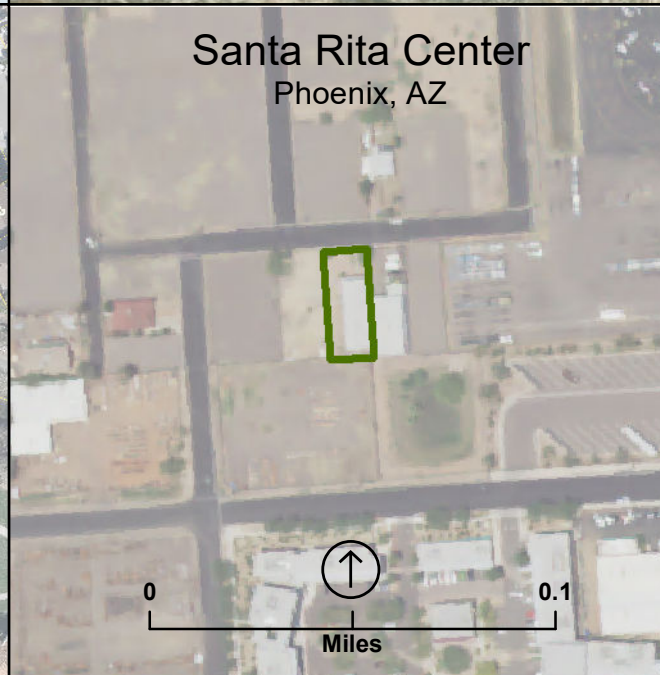
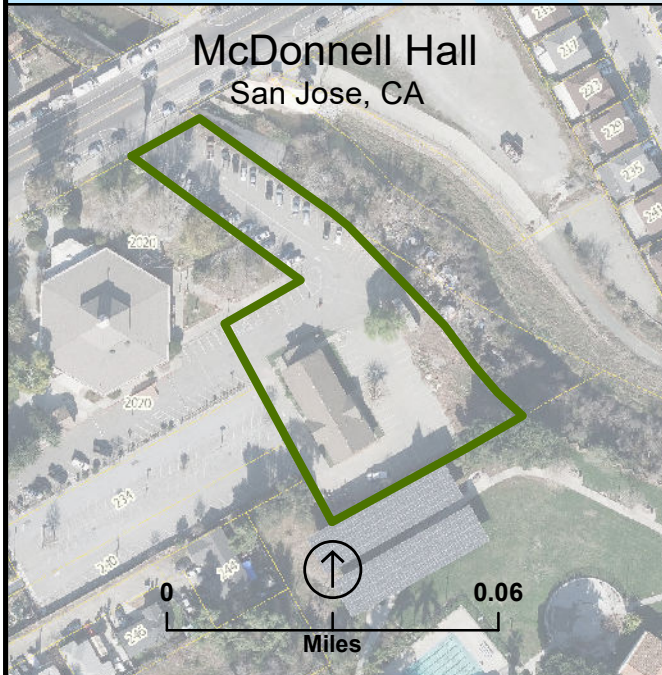
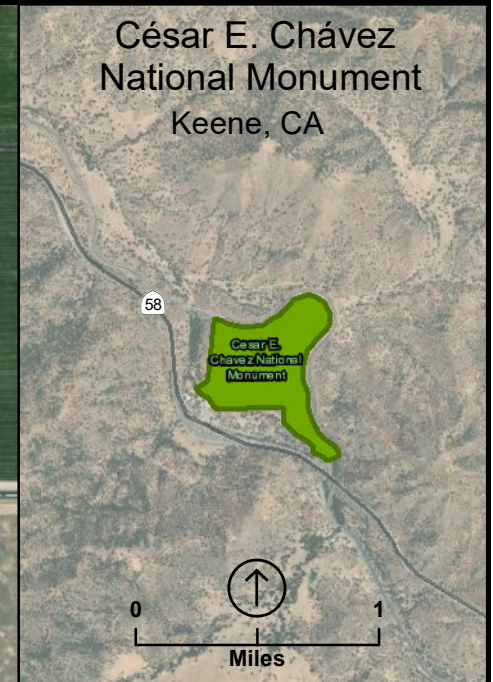




Cesar E. Chavez and the Farmworker Movement National Historical Park Proposed Boundary

National Park Service
U.S. Department of the Interior



-  Proposed NPS Boundary
-  National Monument

OFFICE: PWR Land Resources Program Center
REGION: DOI Regions 8 and 10
PARK: César Chávez and the Farmworker Movement National Historical Park
TOTAL PROPOSED ACREAGE: ± 155.2

MAP NUMBER: 502/179857B

DATE: SEPTEMBER 2022

Sources: NPS, USGS, Santa Clara County and City of Phoenix, AZ.

Sources: NPS, USGS, Santa Clara County and City of Phoenix, AZ.